

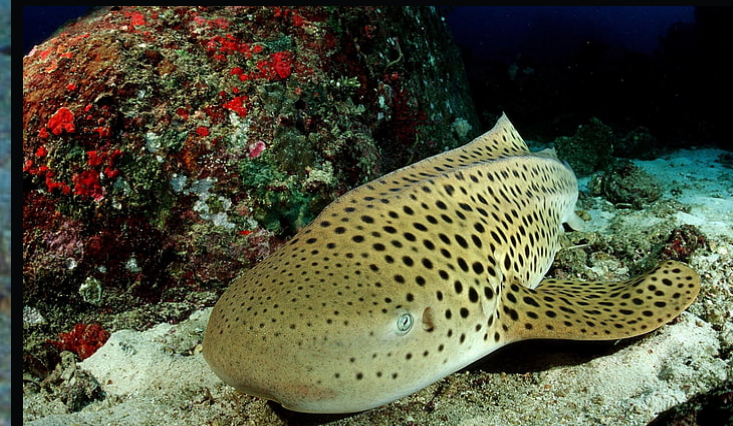
MOST IMAGES IN THE BROCHURE FROM OUR 2012 TRIP

D
I
V
E

S
I
M
I
L
A
N
S



OURS IS ONE OF THE FEW
BOATS THAT DOES A
COMBINED NORTH AND
SOUTH TRIP WITH 18
DIVES



APRIL 02ND TO 07TH 2024

WE ARE GOING BACK FOR
MORE AFTER OUR
FABULOUS DIVE TRIP IN 2023
Click [HERE](#) for a link to our
video

SUBACENTRIC

GO DOWN WITH SOMEONE YOU TRUST!

SIMILANS

D
I
V
E
S
I
M
I
L
A
N
S

"Similan" is a Yawi (a Malayan dialect) word which means nine. The park had originally nine islands numbered 1 to 9 but expanded to include two more remote islands back in 1998; Ko Tachai and Ko Bon. Established as a national park in 1982, Similan Islands are an archipelago of 11 islands in the Andaman Sea, 70 km off the coast in Phang Nga Province. The park covers an area of 140 km² of which 26 km² is land. With a rich marine life consisting of hard and soft coral reefs, crystal clear waters and white beaches, Similan Islands are considered to be one of the best diving sites in the world. The main characteristics of the islands are the rock formations which consist of huge boulders, shallow waters and dense tropical forests.



Most of the Southeast Asia's impressive oceanic marine species can be found in Similan Islands; manta rays, whale sharks, whitetip reef sharks, blacktip reef sharks, leopard sharks, bluespotted ribbontail rays, spotted eagle rays, bowmouth guitarfish, shovelnose guitarfish, hawksbill sea turtles, olive ridley sea turtles, leatherback sea turtles, green sea turtles, giant morays, fimbriated morays, greyface moray eels, great barracudas, green humphead parrotfish, ribbon eels, giant trevallies, humphead wrasses and many more.

OUR LIVEBOARD

D
I
V
E

S
I
M
I
L
A
N
S



- 27 m. long and 6 m. wide diving liveboard which can accommodate divers in en-suite airconditioned twin share cabins with shower and toilet.
- Safe deposit box available in each cabin.
- Common airconditioned TV area with hundreds of movies
- A spacious sundeck
- Delicious Thai and international cuisine catering to all requirements



OUR DIVE ITINERARY*

D
I
V
E

S
I
M
I
L
A
N
S



CLICK [HERE](#) FOR DAILY DIVE ITINERARY AND DIVE SITES



Most liveaboard operators run trips to the Similan islands while a few run trips either to the Similan islands or Hin Daeng, Hin Muang. This is because of the extra fuel expense that is required to cover the distance between the north and south Andaman sea. But so as to make our trip unique and special, we run this special trip to both north and south Andaman in just one single trip to Similan, Koh Bon, Koh Taichai, Richelieu Rock, Koh Haa, Hin Daeng Hin Muang, King Cruiser Wreck and so on). Our trip normally takes 6 days 5 nights with total of 18 dives.



* All dives are subject to weather.

D
I
V
E
S
I
M
I
L
A
N
S

PACKAGE DETAILS

DIVERS. INR 1,10,000/- plus GST
SNORKELERS INR 99,500/- plus GST
NON-DIVERS INR 99,500/- plus GST

INCLUSIONS

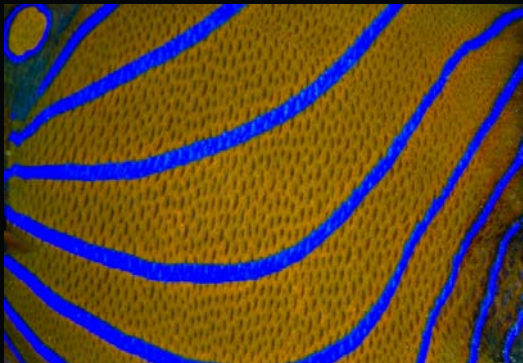
- 18 dives**
- Tanks, weights
- Transfer from/to hotel
- All meals, snacks
- Twin share AC cabins
- Drinking water and fruits

EXCLUSIONS

- National Park Fees Baht 3000
- Nitrox Baht 3600 for trip
- Equip. cost Baht 2500 for trip
- Dive Computer Baht 1250
- Alcoholic beverages
- International/Domestic Flights
- Hotels (price on preference but approx. INR 2500/- pp/pn)
- Dive/travel/covid insurance
- Everything not mentioned in inclusions

DIVE INSURANCE IS MANDATORY please visit www.scubacentric.com and click on Dive Assure Logo at the bottom of the home page.

Current Exchange rate THB to INR is 2.40 (for indication only)



D
I
V
E
S
I
M
I
L
A
N
S

BOOKING DETAILS

Payment Policy:

25% deposit immediately

25% on or before 31st January 2024

50% on or before 28th February 2024

Please note that flight costs will be separate and will need to be paid in total as per airline's policy immediately if we are to get group fares and you opt for the same.

Bookings for the trip will be closed no later than 60 days prior to departure date of the trip.

Cancellation Policy :

100% refund of amount paid on or before 31st January 2024(excluding GST amount).


50% refund of amount paid on or before 28th February 2024(excluding GST amount)

No refunds after 01st March 2024

ALL PAYMENTS SHOULD BE MADE TO:
SCUBACENTRIC LLP
CURRENT ACCOUNT NO: 50200030903550
HDFC BANK – PATTO BRANCH
IFSC CODE: HDFC0001213

Contact:

E Mail : scubacentric@gmail.com

  : +91-9822182402 – Venkat +91-9820031931 - Diggy

WE THANK YOU FOR CHOOSING SCUBACENTRIC AND LOOK FORWARD TO DIVING WITH YOU SOON!



GO DOWN WITH SOMEONE YOU TRUST!